

SMMA

Achieving Net Zero in Design and Construction

Net Zero at Lincoln School (PK-8)

12.2.2021

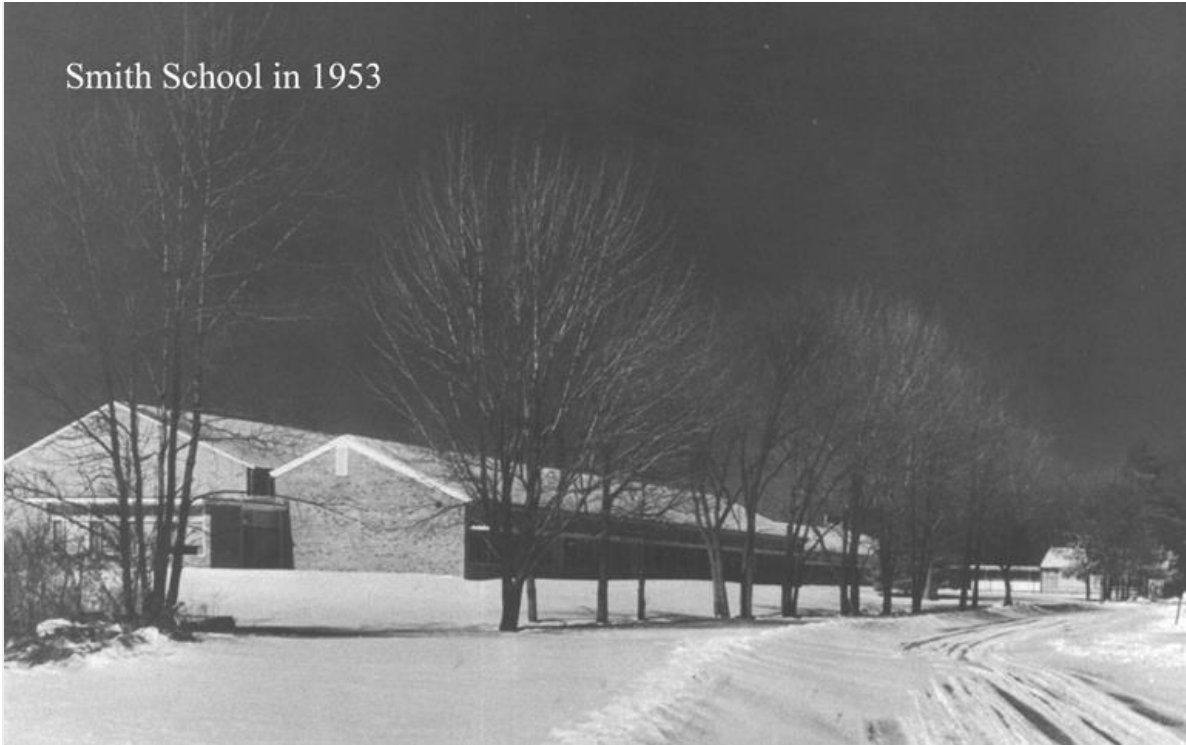


Lincoln School- Ballfield Road Campus

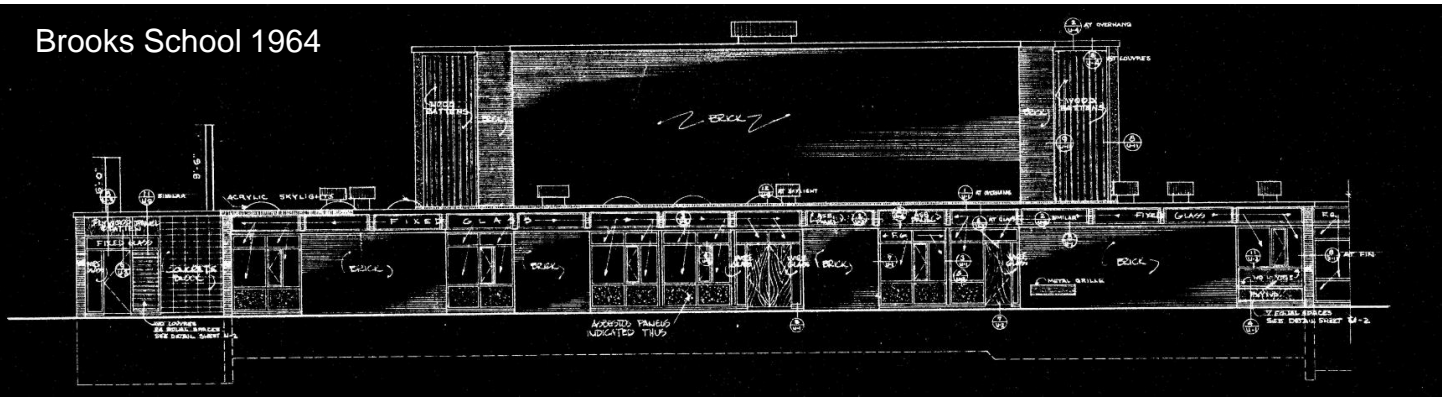


Honoring our History, Building our Future

Smith School in 1953



Brooks School 1964



Predicted EUI

23.9 kBtu/sf

Wall R-Value = **34**

Roof R-Value = **60**

Windows/Curtain wall R-Value = **5**

Window/Wall Ratio = **23%**



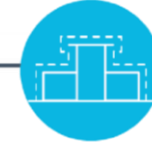
Energy Recovery Units
All Electric VRF System



Occupants-Plug Load Controls



PV Panels



Super Insulated Envelope



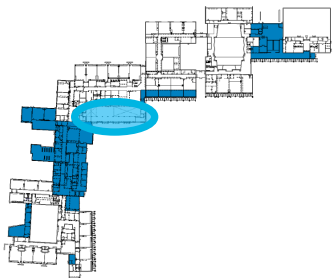
Triple Pane Fiberglass Windows



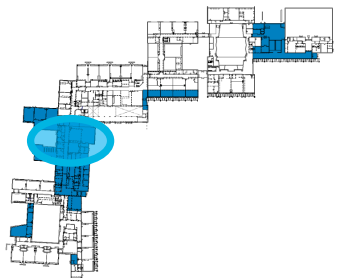
Transformation of Media Center into Dining Commons



Original Media Center



New Learning Commons and Exterior Green Space



Construction



Honoring our History, Building our Future

